



METROPOLITAN  
CEMETERIES BOARD

Railway Road Karrakatta  
PO BOX 53 Claremont WA 6910

Karrakatta: (08) 9383 5200  
Pinnaroo: (08) 9307 0300  
Email: [mcb@mcb.wa.gov.au](mailto:mcb@mcb.wa.gov.au)  
Website: [www.mcb.wa.gov.au](http://www.mcb.wa.gov.au)



*Remembering the Spirit  
of the Child*



METROPOLITAN  
CEMETERIES BOARD



METROPOLITAN  
CEMETERIES BOARD

Considerable care has been taken during the preparation of this catalogue to photograph and portray the various memorials as accurately as possible. However, in some instances the actual memorials may not be identical to those pictured in this catalogue.



## *Contents*

About this guide	2
What is a memorial?	3
Infants' Butterfly Garden	4-7
Children's Memorial Garden	8
Burial Options	9
Urns and Locketts	10
Additional Memorial Options	11
Flower Policy	12-13



## *About this guide*

The Metropolitan Cemeteries Board has produced this guide to assist families who have experienced the loss of a child.

Whether you choose cremation or burial, there are many ways to personalise the child's funeral service and create enduring memories.

We hope the information in this guide will help you with important decisions during a difficult time. It is, however only a guide and we encourage you to make an appointment with our Client Services staff to discuss the options in greater detail.

Our offices are open at the following times:

### ***Karrakatta***

8.30am to 5.00pm weekdays  
 Saturdays 8.00am to 12 noon  
 Telephone: (08) 9383 5200

### ***Pinnaroo Valley, Midland or Guildford Cemetery***

Please ring the Pinnaroo office

8.30am - 5.00pm weekdays  
 Saturdays 9am-1pm  
 Telephone: (08) 9307 0300

A request for memorial form is included in this package. Our Client Services Staff will be pleased to assist you in completing the information, in order to ensure that all details of your request are correct.

## *What is a Memorial?*

A memorial is an enduring tribute and a focus for the bereaved to remember and reflect.

A memorial plays an important role in the grieving process. It forms a link between the past, present and future, helping to unify families and generations.

Our staff will be pleased to assist you with the important decision of selecting an appropriate memorial.

### *When is a memorial appropriate?*

A memorial is most often associated with the placement of cremated remains (ashes) in a cemetery. In some instances the memorial is not placed immediately after the cremation; many families take some time to make a decision about memorialisation.

You may wish to retain the ashes at home but still place a memorial in the cemetery, thus ensuring other family members and friends are able to reflect and remember.

### *What happens to ashes after cremation?*

The Metropolitan Cemeteries Board places the ashes in a special container and retains these in a secure storage area until we receive written instructions from the administrator of the funeral. The administrator is the person who signed the 'Permit to Cremate'.

If the ashes are not collected after six months, we write to the administrator to seek instructions about ashes placement.

### *What are the options for placement of ashes?*

- Placement in the Infants' Butterfly Garden or another area within the Karrakatta, Pinnaroo, Midland or Guildford Cemeteries.
- Placement in an existing or new family grave (in most instances a new memorial may be placed on the gravesite)
- Scattering in a cemetery or other location
- Placement in an urn for retention at home or other location
- Placement of memorial in a public cemetery and retain ashes at home

### *How long does a memorial remain in the cemetery?*

The standard tenure for all memorials is 25 years. After that period has expired, the tenure can be extended.

### *Once the memorial is ready, who places it?*

Metropolitan Cemeteries Board staff place the ashes in the location of your choice. Family and friends are welcome to attend, although there is no obligation to be present. A fee applies for placement of ashes at the memorial when family or friends wish to attend.

### *May I view the memorial and location before I decide?*

Of course. Sample memorials are available for viewing. Our staff will also be pleased to show you the Infants' Butterfly Garden, Children's Memorial Garden and other areas before you make your selection.



## *Infants' Butterfly Garden at Karrakatta*

*The Infants' Butterfly Garden* at Karrakatta Cemetery was developed to meet the special needs of families who have suffered the loss of an infant or very young child. The garden has specially selected flowers and plants which attract butterflies all year.

To commemorate the journey through the cycle of life, elements of earth, water, fire and air are represented in the garden. These symbolic features offer a wide scope for memorialising a special life - from specially engraved stones to sculptures, hand-painted tiles and bronze plaques in the shape of butterflies.

The Infants' Butterfly Garden is a contemporary, yet timeless concept with many options for commemoration. We encourage you to visit Karrakatta and discuss your individual preferences with one of our Client Services staff.

---

### *Infants' Butterfly Garden Memorial Options*

---



#### *Butterfly plaque on Earth Ribbon*

A bronze butterfly plaque can be placed on the ribbon that weaves through the garden.

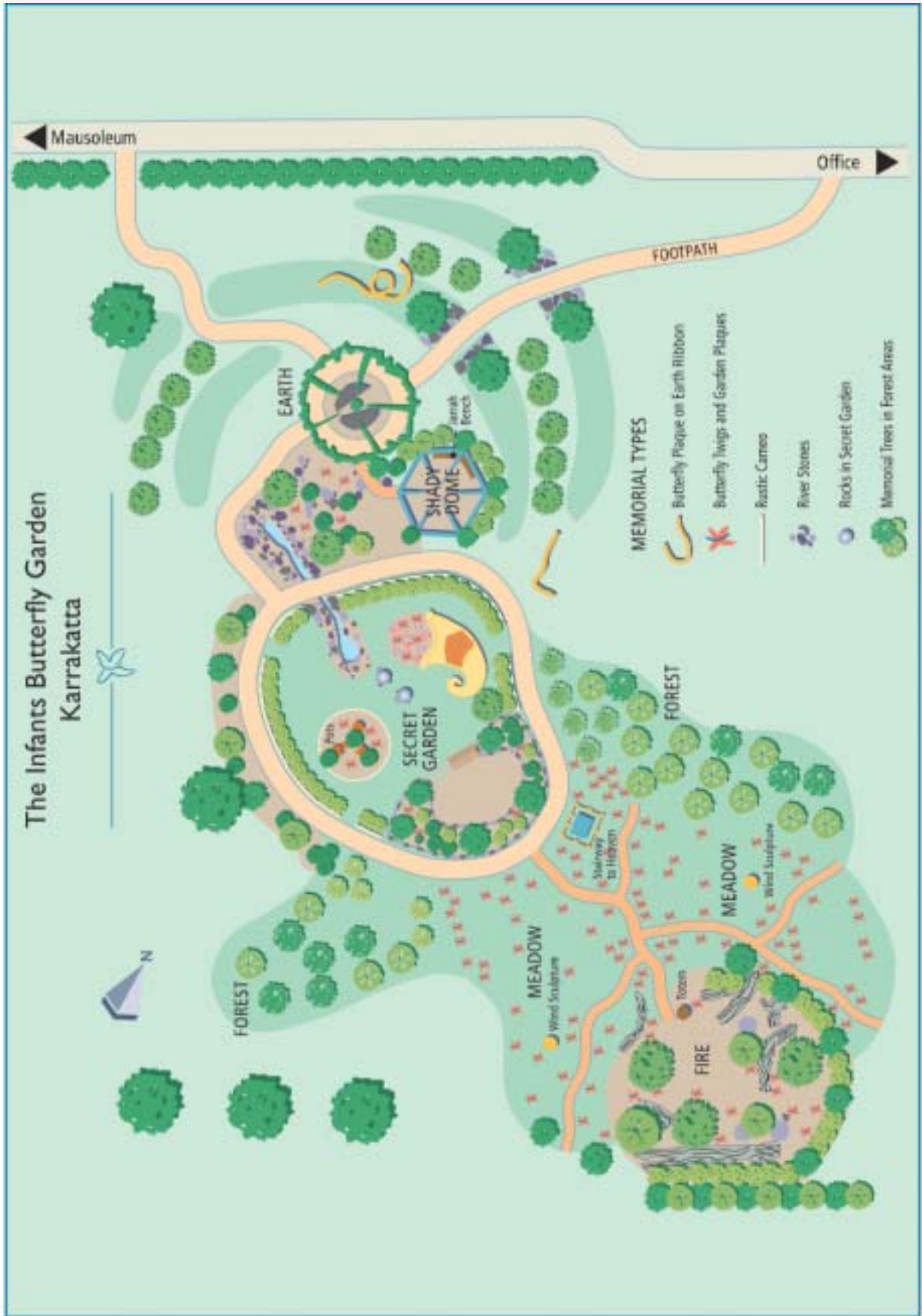
<b>Bronze plaque</b>	Butterfly Shape (180 x 150mm)
<b>Lines</b>	6
<b>Characters</b>	name 17; text 26
<b>Emblems</b>	may be used, but this will reduce number of lines



#### *Butterfly Twig Memorial*

A handcrafted bronze twig and butterfly is set on a coloured base, either tan or green. The bronze plaque develops a beautiful patina with age.

<b>Bronze plaque</b>	Rock shape with indentation for twig
<b>Lines</b>	7
<b>Characters</b>	Line 1 - 14 (name) Line 2 - 17 (name) Other lines - 20
<b>Emblems</b>	may be used, but this will reduce number of lines





### ***Garden Plaques***

These flat, rock shaped plaques of bronze have an appealing, natural patina. They can be placed in a range of locations throughout the garden, including the limestone walls and fallen logs. The plaques can be arranged either on a coloured base or directly onto the walls or logs.

<b><i>Bronze plaque</i></b>	Rock shape
<b><i>Lines</i></b>	6
<b><i>Characters</i></b>	Lines 1 & 2 - 17(name) Other lines - 20
<b><i>Emblems</i></b>	may be used, but this will reduce number of lines



### ***River Stone Memorials***

The hand engraved stones of earth river tones can be selected from the garden's stream to provide space for the simple commemoration of names and dates. Stones are available in small and medium.

<b><i>Small</i></b>	(10 to 15cm diameter)
<b><i>Medium</i></b>	(15 to 25cm diameter)
<b><i>Engraving</i></b>	Approximately 4 lines & 18 characters per line, depending on rock size. Can be hand engraved. Simple emblems may be incorporated.



### ***Rustic Cameos***

These rough hewn oval granite bases are placed beneath the shrubs. The soft pastel plaque colours enhance the natural setting.

<b><i>Bronze plaque</i></b>	Oval Plaque
<b><i>Lines</i></b>	10
<b><i>Characters</i></b>	name 11 to 15; text 14 to 28
<b><i>Emblems</i></b>	Small size emblems only.

## ***Unique Garden Sculptures***



### ***Stairway to Heaven***

This visually striking sculpture is a distinctive commemorative feature to reflect and remember on a young life.

<b><i>Plaque</i></b>	Family choice with final approval from the Metropolitan Cemeteries Board
----------------------	--



### ***Jarrah Bench***

This unique bench, situated under the shady dome provides for ten individual plaques to be placed, or the bench may be purchased as one exclusive memorial.

<b><i>Bronze Plaque</i></b>	Oval or Round Plaque
<b><i>Lines</i></b>	10
<b><i>Characters</i></b>	name 11 to 15; text 14 to 28
<b><i>Emblems</i></b>	Small size emblems only.



### ***Wind Sculpture***

These memorials are prominent features in the native garden area. Made of metal and stone they add variety and individuality to the surrounds.

<b><i>Plaque</i></b>	Family choice with final approval from the Metropolitan Cemeteries Board
----------------------	--



### ***Totem***

This unusual timber and metal memorial allows for a plaque or engraved inscription. Traditionally, the totem pole is a tall pole carved from wood which traces the history of individual families and clans much like a family crest or family tree.

<b><i>Plaque</i></b>	Family choice with final approval from the Metropolitan Cemeteries Board
----------------------	--



### ***Pots on Earth Mound***

These pots, growing out of a mound in the garden, form a distinctive and bold commemorative feature.

<b><i>Plaque</i></b>	Plaques of varying sizes
----------------------	--------------------------



### ***Rock in Secret Garden Lawn***

Two large river stones have their own individual space in the secret garden lawn.

<b><i>Inscription</i></b>	Can be engraved or sandblasted
---------------------------	--------------------------------



### ***Memorial Trees***

A forest of eucalypts allow for placement with provision for adult family members to have interments, to a maximum of four plaques per tree.

<b><i>Bronze plaque</i></b>	Rock shape
<b><i>Lines</i></b>	6
<b><i>Characters</i></b>	Lines 1 & 2 - 17(name) Other lines - 20
<b><i>Emblems</i></b>	may be used, but this will reduce number of lines



## Children's Memorial Gardens

*Karrakatta and Midland* offer special gardens to commemorate children aged up to 13 years.

At Karrakatta, the Children's Memorial Garden has a serene ambience with a traditional gazebo - a beautiful place to reflect and remember.

Ground Niche positions are available together with the Garden of Remembrance.

The Children's Memorial Garden at Midland Cemetery features a timber archway leading into a natural bush land setting. This garden has Garden of Remembrance memorials.



### **Plaque sizes**

- Plaque A** 136 x 75mm  
(Garden of Remembrance – Karrakatta & Midland)
- Plaque B** 229 x 229mm  
(Ground Niche – Karrakatta)

**Available colours** A range of pastel colours is available

### **Inscription guidelines**

#### **Plaque A**

- Lines 6 lines
- Name text 15 letters including spaces
- General text 23 letters including spaces

#### **Plaque B**

- Lines 10 lines (up to 4 extra lines may be purchased)
- Name text 15 letters including spaces
- General text 23 letters including spaces



## *Burial Options*



*Some families* opt for burials for religious or personal reasons. The Metropolitan Cemeteries Board maintains a variety of burial areas at all of our cemeteries, including some areas especially dedicated to children.

Pinnaroo offers a natural serenity unlike any other cemetery in Australia. In keeping with the informality of this native bush land setting, all grave plaques are placed flat into the lawns. Made from resilient bronze, they offer considerable scope for personalisation with emblems, special designs and your desired inscription.

A special garden area dedicated to the memory of children up to 13 years provides for burials with small headstones at Karrakatta.



## *Urns and Locket*s

*Many people express* the wish to retain the ashes of a loved one at home. An elegant urn is a tasteful way of storing cremated remains, and many styles are available from the Metropolitan Cemeteries Board.

### **Wooden urn**

in a variety of woods and finishes

### **Bronze urn**

keepsake size

full size

### **Terracotta urn**

in a range of designs

### **Marble urn**

small

medium

large

### **Cloisssonne urn**

small

large

Brass in velvet box

### **Locket**s

9ct gold/glass locket

Silver/glass locket

Many other styles of urns are available. In some cases it may be necessary to order an urn in specially. Delivery times will vary.



## *Additional Memorial Options*

### *Attend Placement of Ashes*

You may wish for an intimate family service to be conducted at the time the ashes are placed at a memorial location.

---

### *Additional Inscriptions*

For a more personalised memorial, it is possible to include additional inscriptions on many of the available plaques. These inscriptions may include emblems, photographs or extra lines of text.

---



### *Memories e-ternal*

Memories e-ternal is the Metropolitan Cemeteries Board's own online memorial website.

An on-line memorial can be visited over the Internet, any time and from any place in the world.

It offers an enduring form of commemoration that can be accessed by today's and future generations.

We will customise the memorial according to your instructions. It can include a photo album, your chosen memorial text and a eulogy if desired.

Memorials can be password protected so that only authorised visitors can access them, or they can be unrestricted and available to the public.

To view the online memorial service, please visit the Metropolitan Cemeteries Board website at [www.mcb.wa.gov.au](http://www.mcb.wa.gov.au) and select the Memories eternal link.

---

### *Placement of Ashes in a Family Grave*

It may be possible to place ashes in an existing or new family grave in any one of our cemeteries. In this instance, a memorial plaque or inscription may be added to the grave. In some cases it may be necessary to renew the rights to a grave.

---

### *Collection of Ashes*

Following a cremation, the Metropolitan Cemeteries Board places the ashes in a special container, securely labelled and stored. We are able to make the ashes available for collection 24 hours after receiving written or verbal instructions from the administrator of the funeral - that is, the person who obtained the "Permit to Cremate".

For more information on the procedures for collection, please contact our staff.

---

### *Scattering of Ashes*

The Metropolitan Cemeteries Board can arrange for the scattering of ashes within any of our four cemeteries. You may wish to commemorate the scattering with a memorial plaque.

## ***Flower and Ornament Policy*** **Karrakatta, Midland and Guildford Cemeteries**



*The Metropolitan Cemeteries Board* is committed to maintaining our cemeteries and memorial gardens to a high standard. We thank our visitors for observing the following Flower Policy guidelines:

### ***Burial Areas***

Floral tributes, glass domes, vases or any other grave ornaments are not permitted on the ground in lawn sections, or outside the perimeter of kerbed graves. Floral tributes in lawn areas from funerals held the preceding week are excepted.

All monumental work requires Board approval prior to installation.

Temporary grave markers (and fences in monumental sections) are permitted for up to 12 months following a burial at Karrakatta, Midland and Guildford. Please obtain full guidelines from the Metropolitan Cemeteries Board office at Karrakatta or Pinnaroo.

### ***Memorial Gardens***

Visitors may place fresh or artificial flowers at memorials in vases supplied free of charge by the Board. Please do not use more than two vases at each memorial.

Glass vases, receptacles or figurines are not permitted in any areas of the memorial gardens as these items can cause a safety hazard and may be removed.

Picking of flowers or plants is strictly prohibited.

### ***Mausoleum***

Fresh flowers are permitted at the time of a funeral, Christmas, Easter, All Souls Day, Mother's or Father's Day, and the deceased's birthday.

Artificial flowers may be placed in the vase on the granite facing of the crypt. If monumental work is not yet completed, one flower may be adhered with sticking tape to the granite facing.

Vases, receptacles or figurines are not permitted on the ground in the Mausoleum or surrounding area, and may be removed.



METROPOLITAN  
CEMETERIES BOARD

## *Flower and Ornament Policy* Pinnaroo Valley Memorial Park

*Pinnaroo* has been developed to provide a place of beauty and tranquillity with Western Australian flora to be shared by all.

This policy has been developed by the Metropolitan Cemeteries Board in conjunction with community groups such as The Compassionate Friends, WA Inc. Consideration has been given to safety issues for both cemetery visitors and staff, the landscape of the area, and the practicable maintenance of the Park.

Whilst flowers are not prohibited at individual memorials and graves the following conditions for placement apply:

- The only flower containers permitted are those supplied free of charge by the Board and available on request. A maximum of two containers are permitted at gravesites and at each garden plaque.
- Flowers are to be placed adjacent to the plaque only.
- Pinnaroo's grounds management includes the removal of all flowers (fresh or other) from lawn areas and gardens on the morning of the last day of each working week or when mowing or other maintenance takes place. This does not include floral tributes from funerals held the preceding week.
- Items such as vases, ornaments, photo frames, statues and wind chimes are not part of the environment and are not permitted.
- Items re-located by Board staff may be retrieved from collection bays. The Board reserves the right to dispose of items two weeks after being removed.
- Picking of flowers or plants in the Park is strictly prohibited.

Items collected from burial and memorial areas may be retrieved from convenient collection bays throughout the park. Our staff will be able to assist you in locating the appropriate collection point.

We thank you for contributing to the unique beauty of Pinnaroo by observing the above conditions.